

© International Baccalaureate Organization 2022

All rights reserved. No part of this product may be reproduced in any form or by any electronic or mechanical means, including information storage and retrieval systems, without the prior written permission from the IB. Additionally, the license tied with this product prohibits use of any selected files or extracts from this product. Use by third parties, including but not limited to publishers, private teachers, tutoring or study services, preparatory schools, vendors operating curriculum mapping services or teacher resource digital platforms and app developers, whether fee-covered or not, is prohibited and is a criminal offense.

More information on how to request written permission in the form of a license can be obtained from <https://ibo.org/become-an-ib-school/ib-publishing/licensing/applying-for-a-license/>.

© Organisation du Baccalauréat International 2022

Tous droits réservés. Aucune partie de ce produit ne peut être reproduite sous quelque forme ni par quelque moyen que ce soit, électronique ou mécanique, y compris des systèmes de stockage et de récupération d'informations, sans l'autorisation écrite préalable de l'IB. De plus, la licence associée à ce produit interdit toute utilisation de tout fichier ou extrait sélectionné dans ce produit. L'utilisation par des tiers, y compris, sans toutefois s'y limiter, des éditeurs, des professeurs particuliers, des services de tutorat ou d'aide aux études, des établissements de préparation à l'enseignement supérieur, des fournisseurs de services de planification des programmes d'études, des gestionnaires de plateformes pédagogiques en ligne, et des développeurs d'applications, moyennant paiement ou non, est interdite et constitue une infraction pénale.

Pour plus d'informations sur la procédure à suivre pour obtenir une autorisation écrite sous la forme d'une licence, rendez-vous à l'adresse <https://ibo.org/become-an-ib-school/ib-publishing/licensing/applying-for-a-license/>.

© Organización del Bachillerato Internacional, 2022

Todos los derechos reservados. No se podrá reproducir ninguna parte de este producto de ninguna forma ni por ningún medio electrónico o mecánico, incluidos los sistemas de almacenamiento y recuperación de información, sin la previa autorización por escrito del IB. Además, la licencia vinculada a este producto prohíbe el uso de todo archivo o fragmento seleccionado de este producto. El uso por parte de terceros —lo que incluye, a título enunciativo, editoriales, profesores particulares, servicios de apoyo académico o ayuda para el estudio, colegios preparatorios, desarrolladores de aplicaciones y entidades que presten servicios de planificación curricular u ofrezcan recursos para docentes mediante plataformas digitales—, ya sea incluido en tasas o no, está prohibido y constituye un delito.

En este enlace encontrará más información sobre cómo solicitar una autorización por escrito en forma de licencia: <https://ibo.org/become-an-ib-school/ib-publishing/licensing/applying-for-a-license/>.

**Physics**  
**Standard level**  
**Paper 2**

Thursday 3 November 2022 (afternoon)

Candidate session number

--	--	--	--	--	--	--	--	--	--

1 hour 15 minutes

---

**Instructions to candidates**

- Write your session number in the boxes above.
- Do not open this examination paper until instructed to do so.
- Answer all questions.
- Answers must be written within the answer boxes provided.
- A calculator is required for this paper.
- A clean copy of the **physics data booklet** is required for this paper.
- The maximum mark for this examination paper is **[50 marks]**.



Answer **all** questions. Answers must be written within the answer boxes provided.

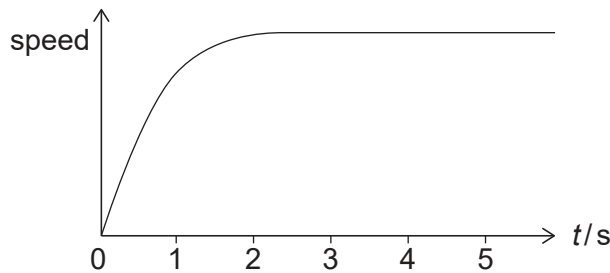
1. A raindrop falls vertically from rest.

(a) State the initial acceleration of the raindrop.

[1]

.....  
.....

The graph shows how the speed of the raindrop varies with time  $t$ .



(b) Explain, by reference to the vertical forces, how the raindrop reaches a constant speed.

[3]

.....  
.....  
.....  
.....  
.....  
.....

(This question continues on the following page)



**(Question 1 continued)**

(c) During the first 3.0 s of motion, the raindrop falls a distance of 21 m and reaches a speed of  $9.0 \text{ m s}^{-1}$ . The mass of the raindrop is 34 mg. The temperature of the raindrop does not change.

(i) Determine the energy transferred to the air during the first 3.0 s of motion. State your answer to an appropriate number of significant figures. [3]

.....  
.....  
.....  
.....  
.....  
.....

(ii) Describe the energy change that takes place for  $t > 3.0 \text{ s}$ . [1]

.....  
.....



16EP03

Turn over

2. A solar heating panel is placed on the roof of a house in order to heat water in a storage tank. The rest of the roof is covered with tiles.

(a) On a certain day, the intensity of the solar radiation that is incident perpendicular to the surface of the panel is  $680 \text{ W m}^{-2}$ .

The following data are available.

Mass of the water in the tank = 250 kg

Initial temperature of the water in the tank =  $15^\circ\text{C}$

Specific heat capacity of water =  $4200 \text{ J kg}^{-1} \text{ K}^{-1}$

Overall efficiency of the heating system = 0.30

Albedo of the roof tiles = 0.20

Emissivity of the roof tiles = 0.97

(i) Determine the minimum area of the solar heating panel required to increase the temperature of all the water in the tank to  $30^\circ\text{C}$  during a time of 1.0 hour. [3]

.....

.....

.....

.....

.....

.....

(ii) Estimate, in  $^\circ\text{C}$ , the temperature of the roof tiles. [3]

.....

.....

.....

.....

.....

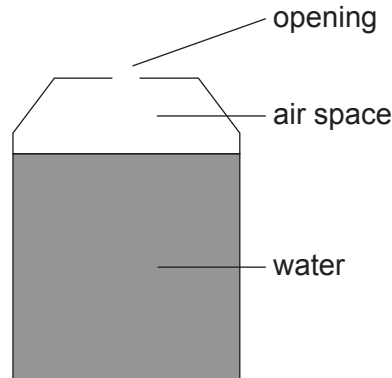
.....

(This question continues on the following page)



**(Question 2 continued)**

- (b) There is an air space above the water in the storage tank with an opening to the atmosphere. Assume that air behaves like an ideal gas.



- (i) State **one** way in which a real gas differs from an ideal gas. [1]

.....

.....

The air space is always at constant atmospheric pressure and constant volume, as the water level is kept constant. The air-space temperature and water temperature are the same.

- (ii) The water is heated. Explain why the quantity of air in the storage tank decreases. [2]

.....

.....

.....

.....

- (c) Another method of harnessing solar energy involves the use of photovoltaic cells.

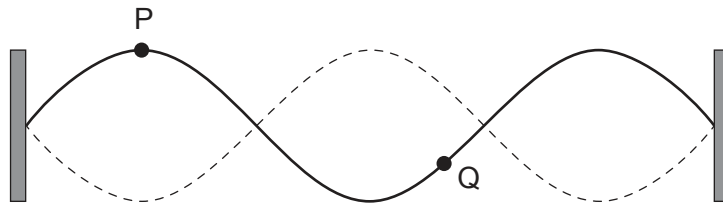
Distinguish between photovoltaic cells and solar heating panels. [1]

.....

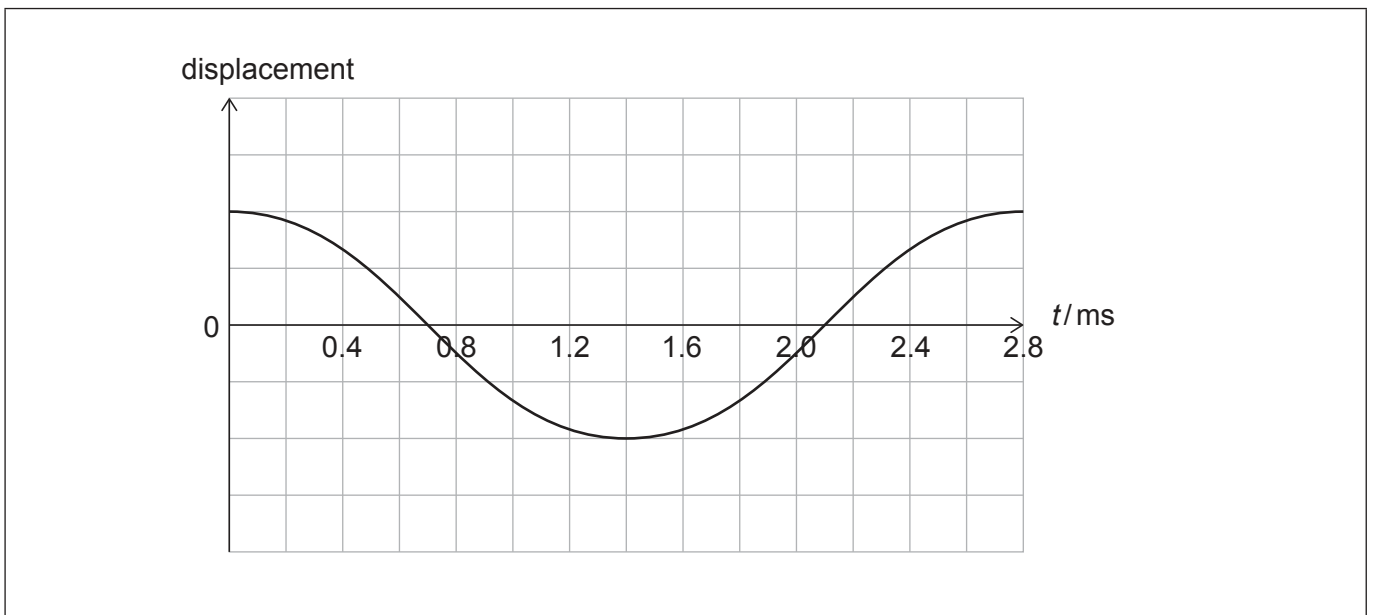
.....



3. A string of length 0.80 m is fixed at both ends. The diagram shows a standing wave formed on the string. P and Q are two particles on the string.



- (a) The variation with time  $t$  of the displacement of particle P is shown.



- (i) Draw, on the axes, a graph to show the variation with  $t$  of the displacement of particle Q. [2]
- (ii) Calculate the speed of waves on the string. [2]

.....

.....

.....

.....

(This question continues on the following page)



**(Question 3 continued)**

(b) It is suggested that the speed  $c$  of waves in the string is related to the tension force  $T$  in the string according to the equation  $T = ac^2$ , where  $a$  is a constant.

(i) Determine the fundamental SI unit for  $a$ . [2]

.....  
.....  
.....  
.....

(ii) The tension force on the string is doubled. Describe the effect, if any, of this change on the frequency of the standing wave. [2]

.....  
.....  
.....  
.....

(c) The standing wave on the string creates a travelling sound wave in the surrounding air.

Outline **two** differences between a standing wave and a travelling wave. [2]

.....  
.....  
.....  
.....





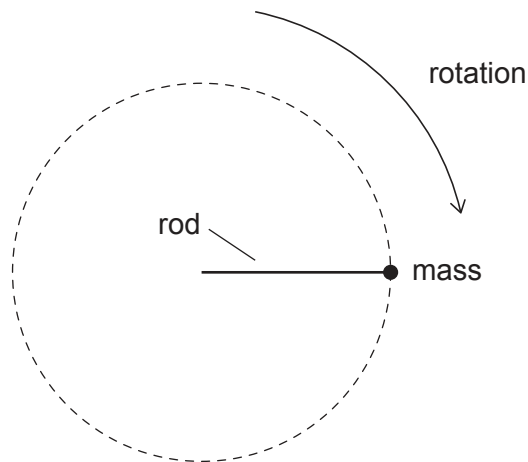
Please **do not** write on this page.

Answers written on this page  
will not be marked.



16EP08

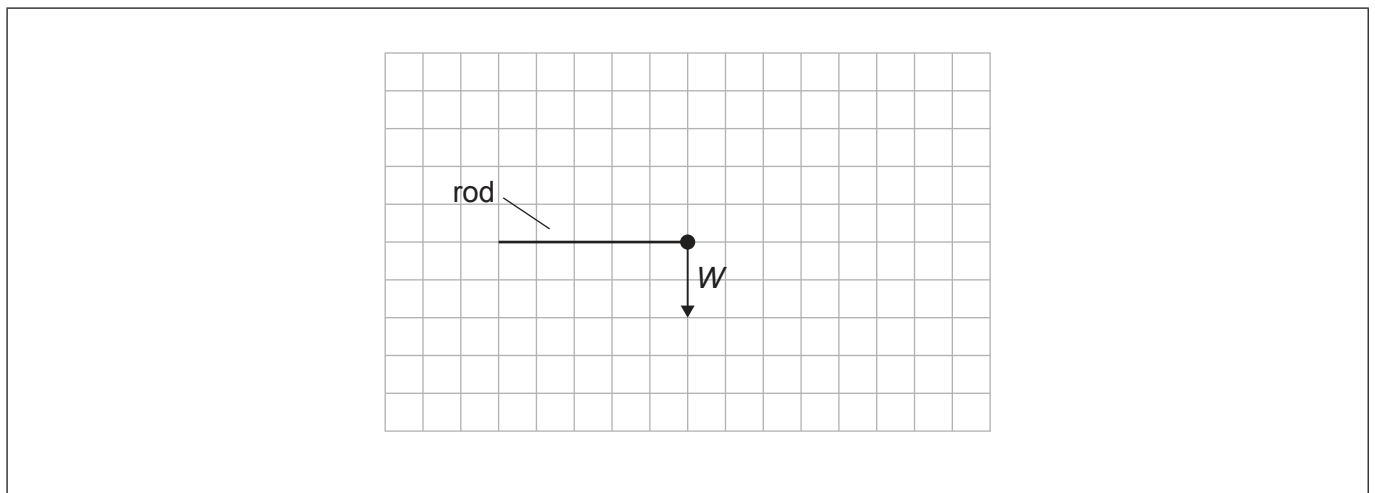
4. A mass is attached to one end of a rod and made to rotate with constant speed in a vertical circle.



- (a) The scale diagram shows the weight  $W$  of the mass at an instant when the rod is horizontal.

Draw, on the scale diagram, an arrow to represent the force exerted on the mass by the rod.

[2]



- (b) Explain why the magnitude of the force exerted on the mass by the rod is not constant. [3]

.....

.....

.....

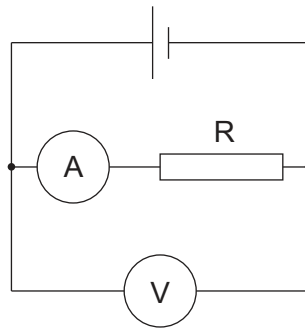
.....

.....

.....



5. Resistor R is connected in a circuit with a cell that has internal resistance.



The ammeter and the voltmeter are ideal.

(a) State what is meant by an ideal voltmeter. [1]

.....  
.....

(b) The cell has an emf of 1.49V. The resistance of R is  $50.0\Omega$ . The voltmeter reads 1.47V.

(i) Show that the internal resistance of the cell is about  $0.7\Omega$ . [2]

.....  
.....  
.....  
.....

(ii) Determine the total power dissipated in the circuit. [2]

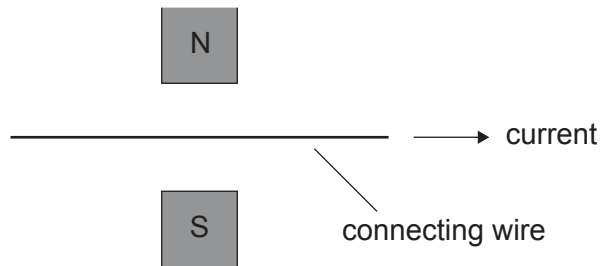
.....  
.....  
.....  
.....

(This question continues on the following page)



**(Question 5 continued)**

One of the connecting wires is placed in a magnetic field. The direction of the current in the wire is shown.



- (c) (i) Explain, by reference to charge carriers in the wire, how the magnetic force on the wire arises. [2]

.....

.....

.....

.....

- (ii) Every current-carrying wire produces a magnetic field.

Describe **one** piece of evidence that supports this statement. [1]

.....

.....



6. (a) Outline, by reference to nuclear binding energy, why the mass of a nucleus is less than the sum of the masses of its constituent nucleons. [2]

.....  
.....  
.....  
.....

Polonium-210 (Po-210) decays by alpha emission into lead-206 (Pb-206).

The following data are available.

Nuclear mass of Po-210 = 209.93676 u

Nuclear mass of Pb-206 = 205.92945 u

Mass of the alpha particle = 4.00151 u

- (b) (i) Calculate, in MeV, the energy released in this decay. [2]

.....  
.....  
.....  
.....

- (ii) The polonium nucleus was stationary before the decay.

Show, by reference to the momentum of the particles, that the kinetic energy of the alpha particle is much greater than the kinetic energy of the lead nucleus. [3]

.....  
.....  
.....  
.....  
.....  
.....

(This question continues on the following page)



**(Question 6 continued)**

- (iii) In the decay of polonium-210, alpha emission can be followed by the emission of a gamma photon.

State and explain whether the alpha particle or gamma photon will cause greater ionization in the surrounding material.

[2]

.....

.....

.....

.....

**References:**

© International Baccalaureate Organization 2022



16EP13

Please **do not** write on this page.

Answers written on this page  
will not be marked.



16EP14

Please **do not** write on this page.

Answers written on this page  
will not be marked.



16EP15



Please **do not** write on this page.

Answers written on this page  
will not be marked.



16EP16